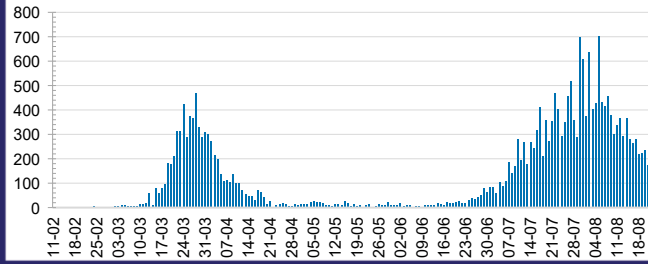




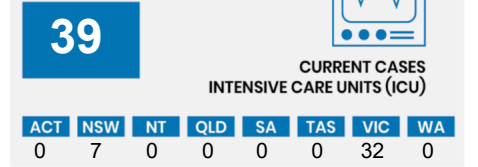
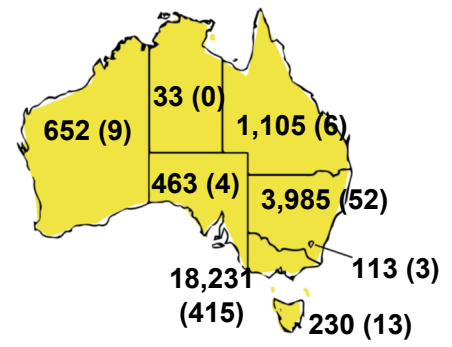
**CURRENT STATUS OF CONFIRMED CASES**



**DAILY NUMBER OF REPORTED CASES**



**CASES (DEATHS) BY STATE AND TERRITORIES**

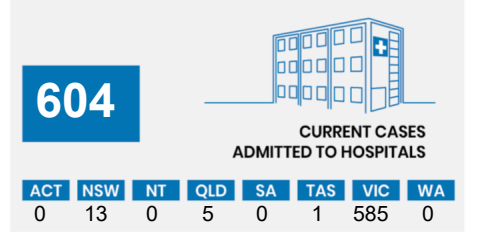
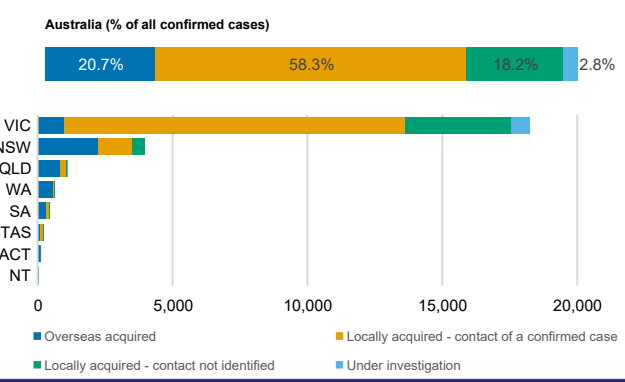


**CASES IN AGED CARE SERVICES**

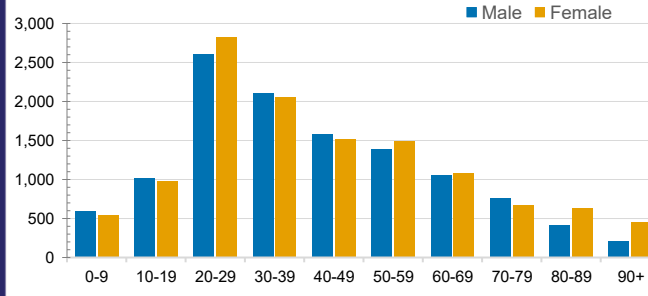
Confirmed Cases	Australia	ACT	NSW	NT	QLD	SA	TAS	VIC	WA
Residential Care Recipients	1745 [68]	0	61 [32]	0	1 (1)	0	1 (1)	1682 [36]	0
In Home Care Recipients	78 [46]	0	13 [13]	0	8 [8]	1 [1]	5 [3]	50 [21]	1 (1)

Cases in care recipients [recovered] (deaths)

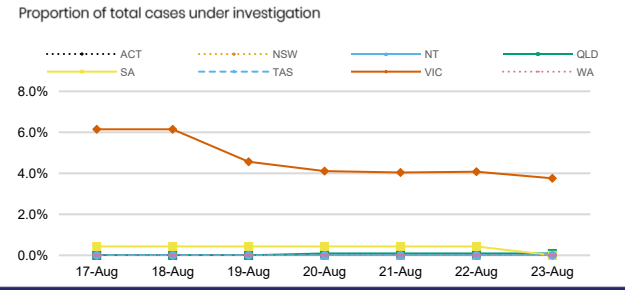
**CASES BY SOURCE OF INFECTION**



**CASES BY AGE GROUP AND SEX**



**PUBLIC HEALTH RESPONSE MEASURE**



**5,706,587** TOTAL TESTS CONDUCTED

**0.4%** POSITIVE

ACT	NSW	NT	QLD
70,247	1,995,573	32,558	782,421
POSITIVE	POSITIVE	POSITIVE	POSITIVE
0.2%	0.2%	0.1%	0.1%
SA	TAS	VIC	WA
349,802	82,942	2,091,328	301,716
POSITIVE	POSITIVE	POSITIVE	POSITIVE
0.1%	0.3%	0.9%	0.2%

**DEATHS BY AGE GROUP AND SEX**

